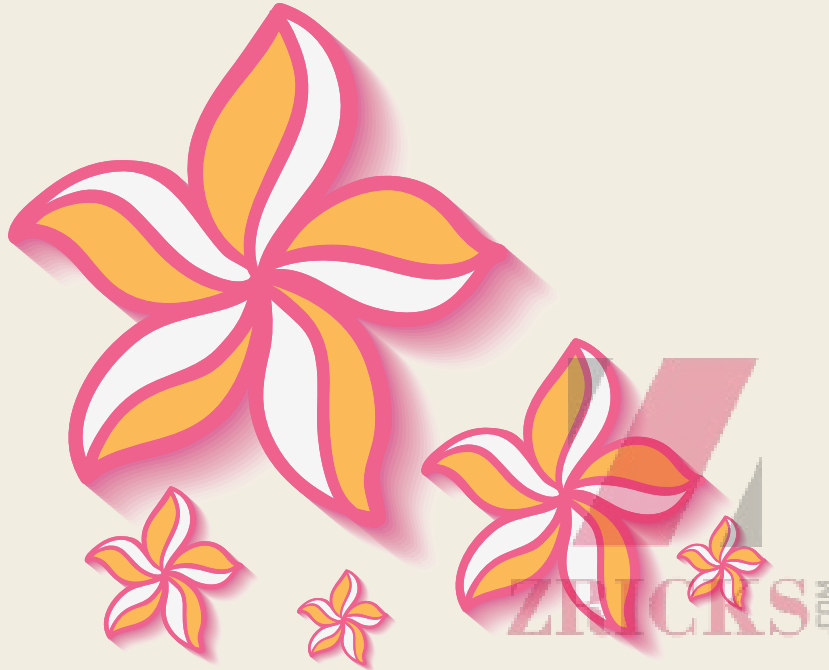


**BRIGADE MEADOWS,
SOUTH BANGALORE'S
BEST INTEGRATED TOWNSHIP**



Floor plans - Plumeria

www.Zricks.com

PLUMERIA
LUXURY HOMES AT BRIGADE MEADOWS
KANAKAPURA ROAD

A city within a city

Welcome to Plumeria at Brigade Meadows, luxury residences in South Bangalore's best integrated township. Join 2,000 families in a lifestyle of bliss, and enjoy a multitude of recreational amenities spread across the 60-acre enclave. Discover the joy of finding everything you need including school, hospital and shopping arcade, only a short walk from your doorstep.

PLUMERIA
LUXURY HOMES AT BRIGADE MEADOWS
KANAKAPURA ROAD

2 & 3-bedroom
luxury apartments
103 sq.m - 151 sq.m
(1 sq.m = 10.764 sq.ft.)



South Bangalore's best lifestyle

Be it two clubhouses, multiple tennis, basketball and badminton courts, a soccer field, golf chip & putt or athletic tracks, Brigade Meadows has everything you need for a lifetime of happiness. You will also be delighted to discover unique amenities like a dog park, a bird park and a horse-riding school in this 60-acre lifestyle habitat.



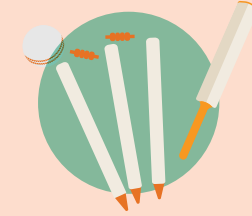
TENNIS & BASKETBALL COURTS



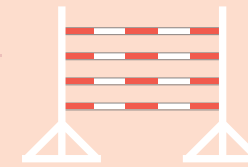
JOGGING TRACK



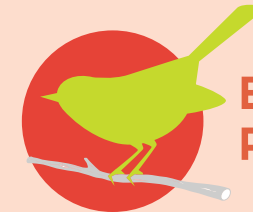
DOG PARK



CRICKET PRACTICE PITCH



HORSE RIDING SCHOOL



BIRD PARK



HEALTHCARE CENTRE

ZRICKS



YOGA DECK



EXERCISE COURT



SCHOOL

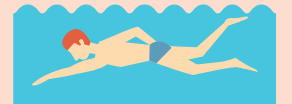


SHOPPING ARCADE



COFFEE SHOP

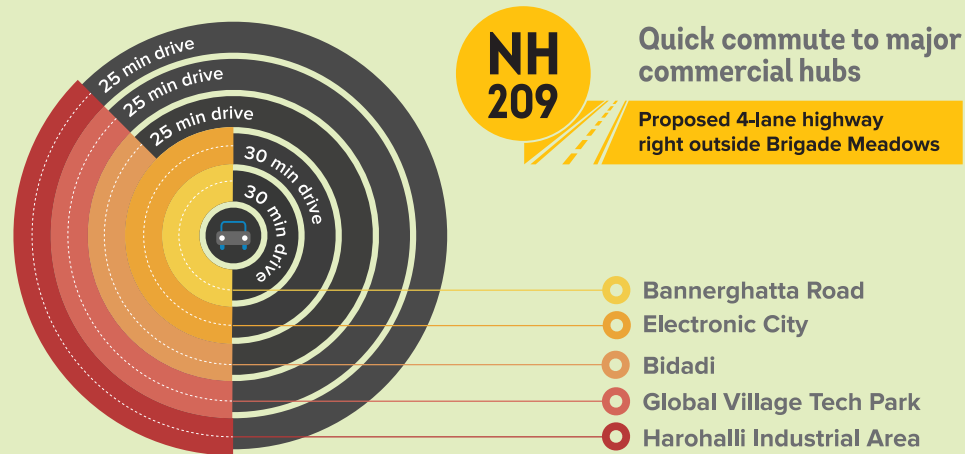
2



CLUBHOUSES
with world-class amenities

An enviable location

Located on Kanakapura Road, Brigade Meadows offers excellent connectivity to key commercial and entertainment hubs of Bangalore. A mere 30 min drive can take you to Bannerghatta Road or Electronic City while the proposed Metro station is only a short walk away. It also enjoys proximity to renowned hospitals like Fortis and Apollo, many popular shopping destinations as well as top educational institutions.



Art of Living
Bangalore's favourite spirituality and self-improvement centre.

Pyramid Valley
A meditation centre where the spiritual leaders of the world unite.

ISKCON Theme Park
A magnificent cultural complex devoted to Lord Krishna.



Education & recreation is just a hop, skip & jump away



Indian Business Academy, Indian Institute of Journalism, KSIT, Dayananda Sagar, APS, Jain Institution



Fortis, Apollo & BGS Hospitals



DAV Public School, Valley School, Yashasvi International, BGS International, Delhi Public School, Kumarans, Jain School



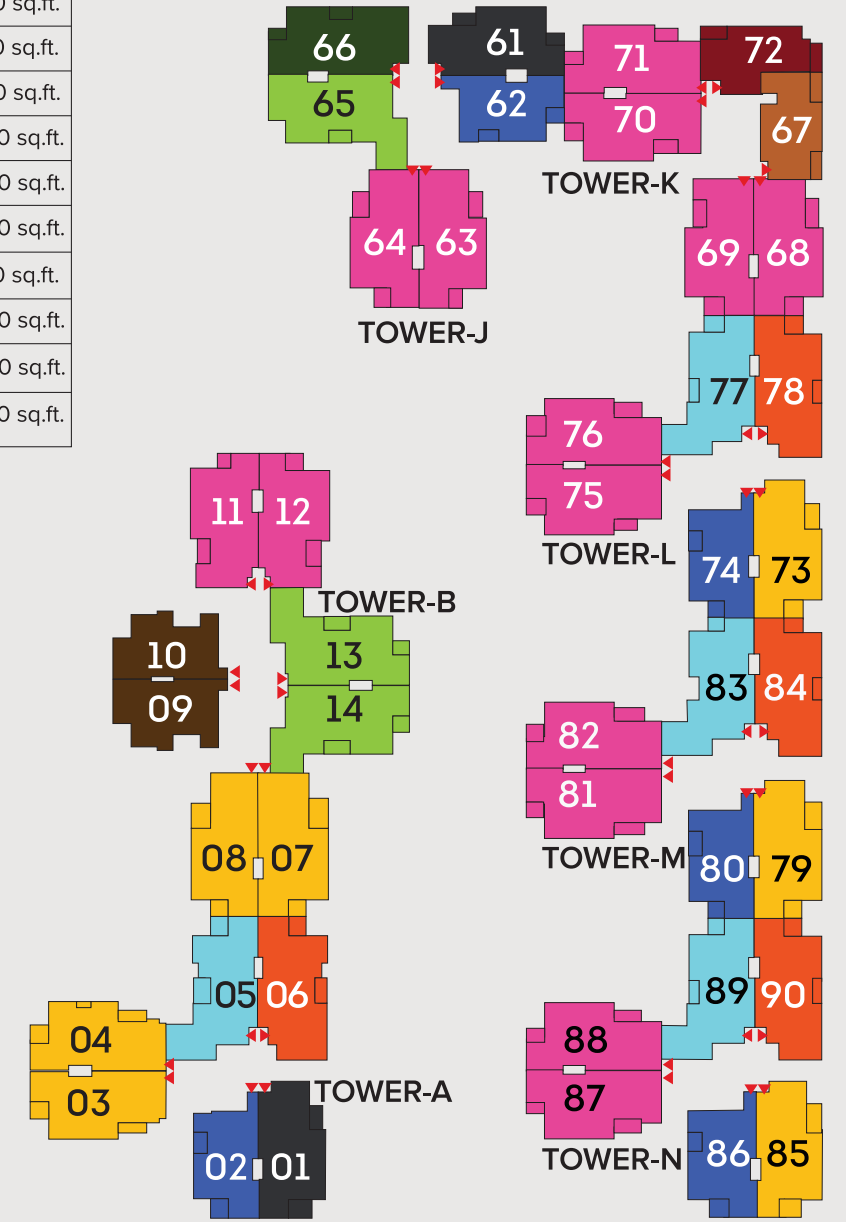
Guhantara, Wonderla, Meenakshi Mall, Metro Cash and Carry

Master plan



Key plan

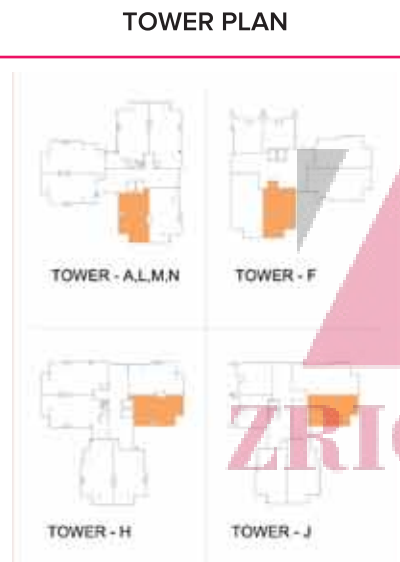
	2- BEDROOMS + 2 TOILETS - 1110 sq.ft.
	2- BEDROOMS + 2 TOILETS - 1140 sq.ft.
	2- BEDROOMS + 2 TOILETS - 1170 sq.ft.
	2- BEDROOMS + 2 TOILETS - 1190 sq.ft.
	3- BEDROOMS + 2 TOILETS - 1440 sq.ft.
	3- BEDROOMS + 2 TOILETS - 1460 sq.ft.
	3- BEDROOMS + 2 TOILETS - 1480 sq.ft.
	3- BEDROOMS + 3 TOILETS - 1510 sq.ft.
	3- BEDROOMS + 3 TOILETS - 1550 sq.ft.
	3- BEDROOMS + 3 TOILETS - 1600 sq.ft.
	3- BEDROOMS + 3 TOILETS - 1630 sq.ft.



ZRICKS.COM



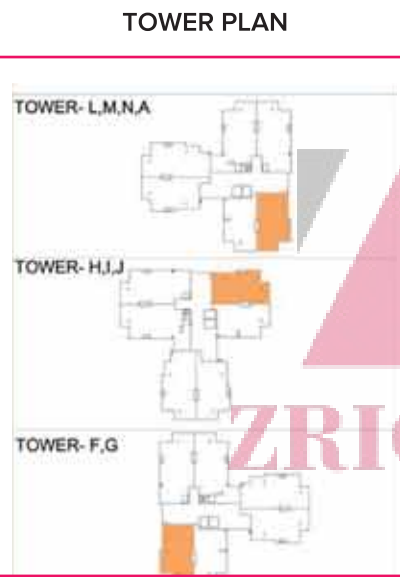
DISCLAIMER: The amenities depicted in the master plan and / or the marketing brochure are only indicative and are subject to future variation/s & changes. The Developer reserves the right to add or delete any of the amenities or features shown in master plan or brochure or change its location at its sole discretion. The Developer is wholly exempt from any liability on account of any claim in this regard. 1 square metre = 10.764 square feet. E&OE



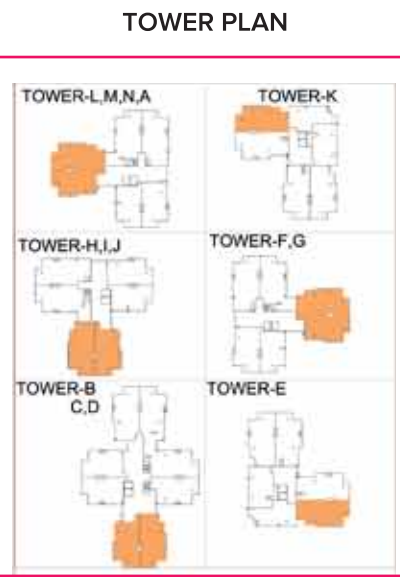
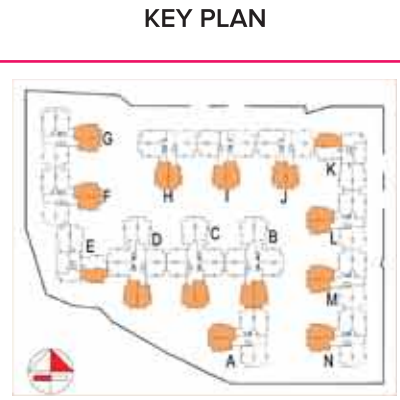
2-BEDROOM + 2-TOILET TYPE: A
 SUPER BUILT UP AREA: 1170 SFT
 FLOORS - GROUND AND FIRST FLOOR
 TOWER: A, F, H, J, L, M, N
 UNIT NO.: G86, 186, G80, 180, G74, 174,
 G02, 102, G41, 141, G50, 150, G62, 162



2-BEDROOM + 2-TOILET TYPE: J
 SUPER BUILT UP AREA: 1190 SFT
 FLOORS - TYPICAL FLOOR
 TOWER - A, F, G, H, I, J, L, M, N
 UNIT NO. - 286-886, 262-862,
 256-856, 250-850, 202-802, 274-874,
 280-880, 241-841, 247-847,



3-BEDROOM + 2-TOILET TYPE: A
 SUPER BUILT UP AREA: 1440 SFT
 FLOORS - TYPICAL FLOOR
 TOWER - A, L, M, N, H, I, J, F, G
 UNIT NO. - 285-885, 269-879,
 273-873, 201-801, 249-849, 255-855,
 261-861, 242-842, 248-848



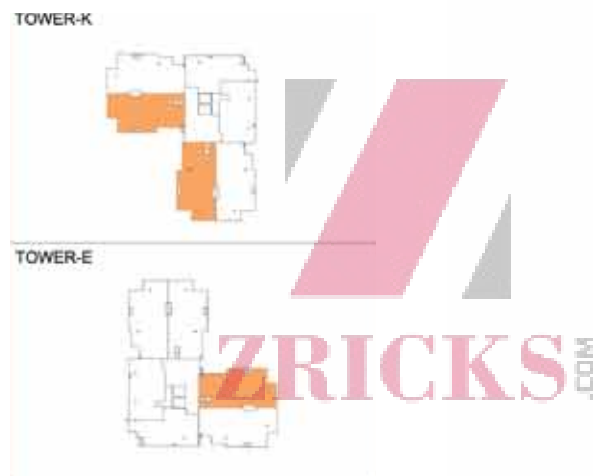
3-BEDROOM + 2-TOILET TYPE: A
 SUPER BUILT UP AREA: 1460 SFT
 FLOORS - GROUND, FIRST & TYPICAL FLOOR
 TOWER - A, B, C, D, E, F, G, H, I, J, K, L, M, N
 UNIT NO. - G04, 104, 204-804, 103, 203-803,
 107-807, 108, 208-808, 115-815, 116, 216-816,
 129-829, 130, 230-830, G34-834, 140-840, 146,
 246-846, 151, 251-851, G52, 152, 252-852,
 157, 257-857, G58, 158, 268-858, G64, 164,
 264-864, G71, 171, 271-871, G68, 168, 268-868,
 187, 287-887, G39-839, G45-845, G88, 188,
 288-888, 181, 281-881, G82, 182,
 282-882, 175, 275-875, G76, 176, 276-876



KEY PLAN



TOWER PLAN

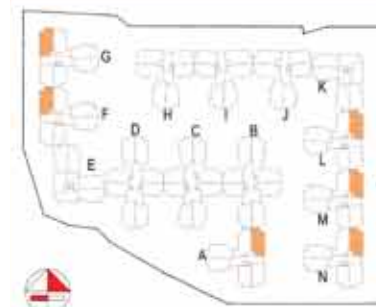


3-BEDROOM + 2-TOILET TYPE: B
 SUPER BUILT UP AREA: 1480 SFT
 FLOORS - GROUND, FIRST & TYPICAL
 FLOOR TOWER - E, K
 UNIT NO. - G69, 169, 269-869, G70, 170,
 270-870, G33, 133, 233-833

PLUMERIA
 LUXURY HOMES AT BRIGADE MEADOWS
 KANAKAPURA ROAD

www.Zricks.com

KEY PLAN



TOWER PLAN



3-BEDROOM + 3-TOILET TYPE: A
 SUPER BUILT UP AREA: 1510 SFT
 FLOORS - GROUND, FIRST & TYPICAL
 FLOOR TOWER - A, L, M, N, F, G
 UNIT NO. - G43, 143, 243-843, 237-837,
 G06, 106, 206-806, G78-878,
 G84-884, G90-890

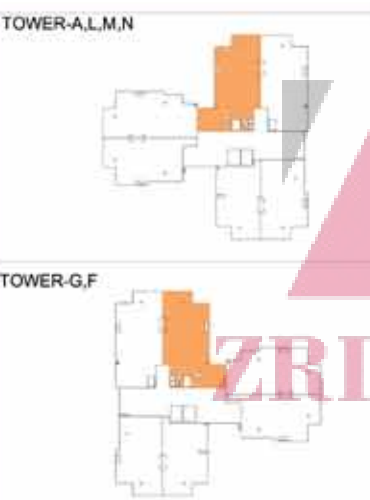
PLUMERIA
 LUXURY HOMES AT BRIGADE MEADOWS
 KANAKAPURA ROAD



PLUMERIA
 LUXURY HOMES AT BRIGADE MEADOWS
 KANAKAPURA ROAD



TOWER PLAN



3-BEDROOM + 3-TOILET TYPE: B
 SUPER BUILT UP AREA: 1600 SFT
 FLOORS - FIRST & TYPICAL FLOOR
 TOWER - A, L, M, N, F, G
 UNIT NO. - 189, 289-889, 177,
 277-877, 183, 283-883, 105,
 205-805, 144, 244-844, 238-838



TOWER PLAN



3-BEDROOM +3-TOILET TYPE: B2
 SUPER BUILT UP AREA: 1630 SFT
 FLOORS - FIRST & TYPICAL FLOOR
 TOWER - A, L, M, N, F, G
 UNIT NO. - 265-865, 153,
 253-853, 159, 259-859

SPECIFICATIONS

FLOORING

Living, dining & kitchen: Vitrified tiles
Master bedroom: Laminated wooden flooring
Other bedrooms: Vitrified tiles
Balcony & deck : Anti-skid ceramic tiles
Toilets: Ceramic tiles
Kitchen & utility: Vitrified tiles
Lift lobby & common areas: Vitrified tiles
Staircase: Step tiles
Terrace: Clay tiles with water proofing

DADO

Toilet dado: Glazed tile cladding upto false ceiling height

TOILET FIXTURES & ACCESSORIES

CP fittings: Ess Ess/Jaquar or equivalent make
Sanitary fixtures: Parryware/Hindware or equivalent

DOORS & WINDOWS

Main door & bedroom doors: Hardwood door frames, flush door shutters with both sides synthetic enamel painted.
Windows: Aluminium glazed windows with MS grills & bug screen
Balcony & staircase railing: MS railing

PAINTING & FINISHES

Internal walls of apartment: Acrylic emulsion paint
Internal ceilings of apartment: Oil bound distemper
Exterior finish of the building: Weather proof acrylic based paint with textured scratch finish

ELECTRICAL LOAD

Power supply:
3-bedroom: 5 kW
2-bedroom: 4 kW
1-bedroom & 1-bedroom with study: 3 kW

DG Backup

3-bedroom: 3 kW
2-bedroom: 2 kW
1-bedroom & 1-bedroom with study: 1 kW
Modular switches: Anchor Roma or equivalent

LIFTS

2 passenger lifts and 1 staircase for a core of 4 units
2 passenger lifts and 2 staircases for a core of 8 units

SECURITY SYSTEM

Provision for intercom facility

Awards and Accolades

An award-winning brand, Brigade Group has developed premium residences, luxury apartments, villas, retirement homes, office buildings, software parks, malls, clubs, spas, hotels and serviced residences.

Brigade Crescent

“Luxury Apartment Project of the Year in CBD - Bangalore”
- Annual Silicon India Bangalore Real Estate Awards 2014.

Brigade Group

Selected as one of India's Best Companies to Work For in 2014 by The Economic Times and Great Place to Work Institute, for the fourth consecutive year.

World Trade Center Bangalore

“The Best Commercial Complex in Bengaluru Zone”
- CREDAI Real Estate Awards Karnataka 2013.

Brigade Gateway

“Integrated Township of the Year”
- Realty Plus Excellence Awards 2013 - South.

Brigade Gateway

“The Best Theme Based Township of the Year”
- CREDAI Real Estate Awards 2012.

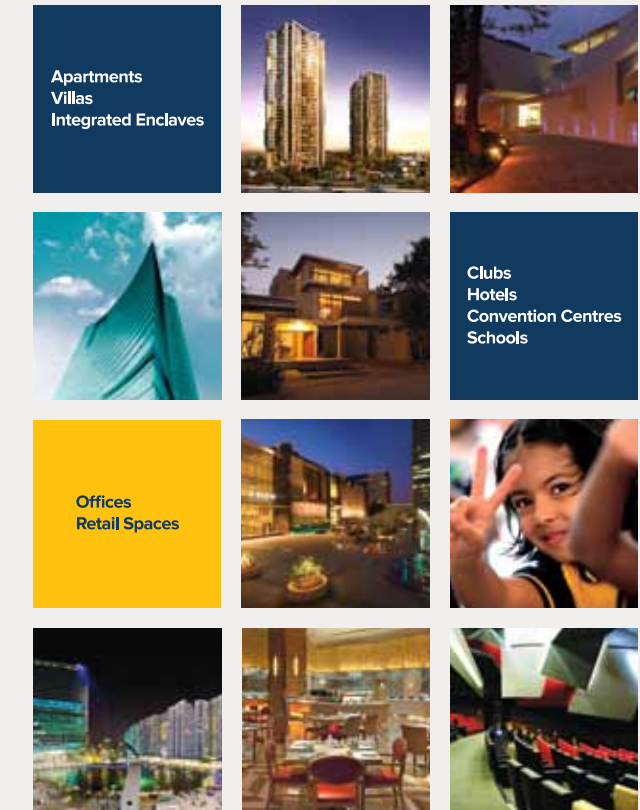
Orion Mall

Winner of 4 awards at ET Now
- Asia Retail Congress 2012 Awards.

Brigade Group

Conferred the “Platinum Award of Excellence” by Construction World in 2012, for being recognized as one of India's Top Ten Builders for 5 consecutive years (2007 - 2011)

Multiple domains. Single-minded commitment.



Brigade Group commenced operations in 1986, and over the years, has evolved into a brand that is synonymous with Innovation, Quality, Trust and Customer Satisfaction.

Headquartered in Bangalore, Brigade Group has a network of offices across South India, an office in Dubai, and is represented in the USA by an accredited agent, Legion Real Estate. Brigade Group's portfolio includes residential, offices, retail, hospitality and education.

With over 20 million square feet of developed real estate, across 100 buildings, Brigade Group has emerged as one of India's leading property developers, and is constantly setting new benchmarks in the real estate industry.

The information herein, i.e. design specifications, illustrations etc. are subject to change without notification, as may be required by the relevant authorities or the Developer's Architect and cannot form part of an offer or contract. Whilst every care is being taken in providing this information, the developers and managers cannot be held liable for variations. All illustrations are artist's impressions only, and do not form part of the standard offering. The plans & specifications are subject to variations, modifications and substitutions by the company's Architect and / or relevant approving authorities.

1 square metre = 10.764 square feet. E&OE.



BrigadeMeadows.in

INDIA Call 1800 102 9977 salesenquiry@brigadegroup.com

USA Call +1 650 494 4975 info@legionre.com

DUBAI Call +971 4 355 5504 dubaisales@brigadegroup.com

Model Apartment & Marketing Office: Brigade Meadows, Next to Art of Living, Kanakapura Road, Bangalore.

Also visit us at **Experience Centre:** Ground Level, World Trade Center, Brigade Gateway Campus,

Dr. Rajkumar Road, Malleswaram-Rajajinagar, Bangalore.

www.Zricks.com